

## **Historic, Archive Document**

Do not assume content reflects current scientific knowledge, policies, or practices.



62189

ac

LIBRARY  
★ FEB 2 - 1954 ★  
U. S. Department of Agriculture



# Wholesale Price List

FALL 53 — SPRING 54

## The Tankard Nurseries

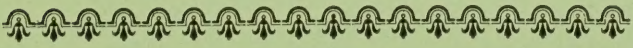
Exmore, Virginia

SPECIALIZING IN

Azaleas

Broad Leaved Evergreens

General Ornamentals



# Members

VIRGINIA NURSERYMEN'S ASSOCIATION

SOUTHERN NURSERYMEN'S ASSOCIATION

AMERICAN ASSOCIATION OF NURSERYMEN

**THE TANKARD NURSERIES**

**Exmore, Virginia**

L. D. TELEPHONE: Office-Belle Haven 2-6211

J. E. TANKARD: Belle Haven 2-2889

S. D. TANKARD, Jr.: Belle Haven 2-3244

Located on the Famous

## **EASTERN SHORE of VIRGINIA**

Where "Heaven and Earth Meet" in the words of Capt. John Smith who described this land as the best suited for man's habitation of any of the many places he had been.

### **THE OLD HAND AT THE NEW STAND**

"There is no substitute for experience." Sam Tankard, Jr. of the Tankard Brothers has been in the Nursery business for 26 years. He and brother John give close supervision to growing good stock and careful attention to filling your orders.

In 1946, they established the present nursery at Exmore, Virginia and now have a large stock of the finest of ornaments with which to serve old and new customers.

Tankard's is not the largest nursery in the country, but it is one of the best.

The Eastern Shore and the Del-Mar-Va Peninsula have become a great nursery center. Come and find all your wants.

## **WHOLESALE PRICE LIST**

### **FALL 53 — SPRING 54**

Within easy trucking distance of Eastern points, but we can ship anywhere by express, freight, or truckload.

We have customers in 17 states - from Mass. to Oklahoma, and have received many compliments on our plants and our packing.

**Terms and Conditions:-** Prices are F. O. B. Exmore, Virginia, packing in boxes and bales additional, subject to prior sale, and our confirmation of the order. Terms are cash with order or 1-4 cash with order, balance C. O. D., unless credit has been established with us.

50 plants at 100 rate; 500 at 1000 rate.

WE CAN DIG AND SHIP ALMOST ANY WEEK DURING THE WINTER, SPRING OR FALL. However, we advise you to let us have your order at once so we may reserve stock for you. Many items listed are scarce this season.

We box Azaleas and pack deciduous stock for L. C. L. shipment by Rail and to some destinations by truck lines, but cannot undertake to box and ship larger evergreens. These are offered only for bulk shipment by truck or car load.

# AZALEAS

**For forcing and landscape planting.**

We grow many thousands of beautiful plants, dense, and bushy. These are the finest Azalea plants we have ever raised. Grown in natural Azalea soil in the field, under full sun. Place your order now as there were not enough plants to meet the demand again last season, and sales have already taken the majority of this year's crop.

Within easy trucking distance of Eastern points, but we can ship anywhere by express, freight or truckload.

**For Azalea orders, 1000 rates apply on all orders for 500 or more plants for bulk (truck) shipment. 100 rates apply on all Azalea orders to be packed for shipment in boxes.**

**Only a few thousand left, mostly Hinodegiri and Coral Bells Order at once and early for next season.**

## KURUME VARIETIES

**PRICES** Kurume varieties, (\*\* except Hinocrimson which is priced separately on next page.)

**Add 10c per plant if burlap wrapping is desired.**

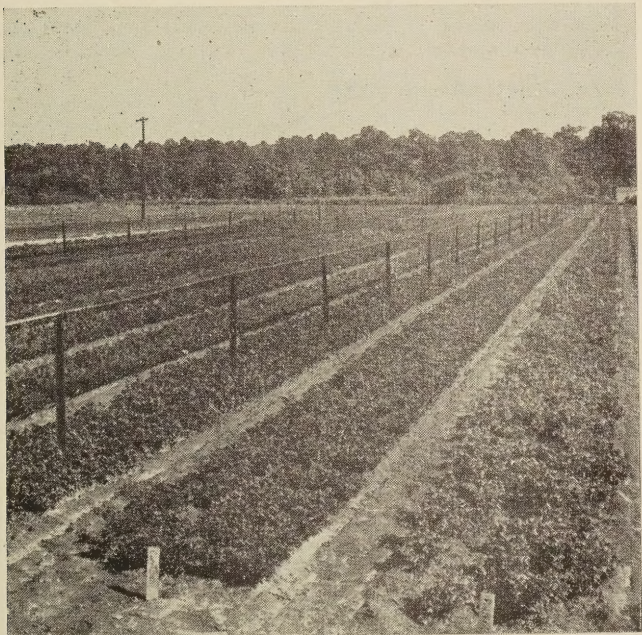
	Per 100	250-499	Per 1000
6 - 8 in. spread .. each ..	\$ .80	\$ .75	\$ .70
8 -10 in. spread .. each ..	1.10	1.00	.90
10-12 in. spread .. each ..	1.35	1.25	1.15

**VARIETIES:** Note sizes available & those sold out below.

**AMOENA** - Hose-in-hose,rosy purple flowers. Very hardy. Few left - 8-10 in.

**CHRISTMAS CHEER** - Hose-in-hose Christmas red flowers. Few left - 6-8 in.

**CORAL BELLS** - Hose-in-hose deep pink. The favorite pink Azalea - 6-8 in., only.



This is how our Azaleas look.  
Visit us and see our fine stock.

## AZALEAS — continued

**FLAME** - Hose-in-hose bright madder red. Tall grower. Sold out.

**HEXE** - Hose-in-hose, large crimson-red. Late flowering-often at Mother's Day. Sold Out.

**HINODEGIRI** - Brilliant red. The standard hardy Azalea. 6-8 in., 8-10 in., 10-12 in.

**PINK PEARL** - Hose-in-hose light pink. Vigorous-excellent foliage. Sold out.

**SALMON BEAUTY** - Hose-in-hose, large salmon pink. Sold out.

**SNOW** - Hose-in-hose snow white flowers. Good grower - glossy foliage. 6-8 in.

**Hino-Crimson** - Far superior to Hinodegiri because of its deep crimson color which does not fade. Hardiness equal to or surpassing Hinodegiri.

**Burlapping, 10¢ each additional.**

	Per	Per	Per
	100	250-499	1000
6 - 8 in. spread each .....	\$0.90	\$0.85	\$0.80
8 -10 in. spread each .....	1.25	1.15	1.05

## INDICA AZALEAS

**FORMOSA** - Large purple flowers. Rapid grower, where hardy.

Prices, balled, without burlapping.

12-15 inch spread - each .....	\$1.00
15-18 inch spread - each .....	1.25
18-24 inch spread - each .....	1.50
2-2½ inch spread - each .....	2.00

**LEDIFOLIA (INDICA) ALBA** - Large white.

8 -10 inch spread - each .....	1.00
10-12 inch spread - each .....	1.25

## KAEMPFERI HYBRID AZALEAS

These are large vigorous-growing azaleas recently developed to give the hardiness of Kaempferi in combination with the gorgeous large flowers of the other parent, Malvatica

**Few left, ask for prices.**

## GLENN DALE HYBRID AZALEAS

Recently introduced by the U. S. D. A., these crosses produce flowers of large size and outstanding colors on vigorous plants of unusually good foliage and hardiness. Only a few left unsold.

**BUCCANEER** - Brilliant orange-red. 10-12 in., 12-15 in.

## DEERFIELD HARDY HYBRID AZALEAS

Zero-White. Few 8-10 in., and 10-12 in.

## PRICES: Glenn Dale and Deerfield Varieties

8-10 inch spread, each per 10 .....	\$1.35
10-12 inch spread, each per 10 .....	1.60
12-15 inch spread, each per 10 .....	2.00

# Broad Leaved Evergreens

All first-class, dense, pruned plants with good color and good roots, properly dug and burlapped.

**All Evergreens B. & B.**

EACH PER 10

**ABELIA grandiflora.**

2-3 ft. ....	\$1.50
3-4 ft. ....	2.50



**ABELIA grandiflora**

JOHN TANKARD looking 'em over, Oct. 2, 1953.

**BUXUS sempervirens.** American Boxwood. Beautiful deep green plants.

	Columnar Form	Heavily Sheared Pyramids
15-18 in. ....		2.25
18-21 in. ....	2.00	3.00
21-24 in. ....	2.75	3.75
24-27 in. ....	3.25	
27-30 in. ....	4.00	



**BUXUS sempervirens (American-right)**

**BUXUS suffruticosa (old English-left)**

SAM TANKARD holding the spade, Oct. 2, 1953

**BROADLEAF EVERGREENS — continued**

EACH PER 10

**CAMELLIA** *sasanqua*, **MAIDEN'S BLUSH.**

Delicate single pink flowers, large in size, fragrant in Oct and Nov. This is the hardy *Camellia* of easy culture, much in demand.

2-2½ ft. ....	3.25
2½-3 ft. ....	4.00
3-3½ ft. ....	5.00

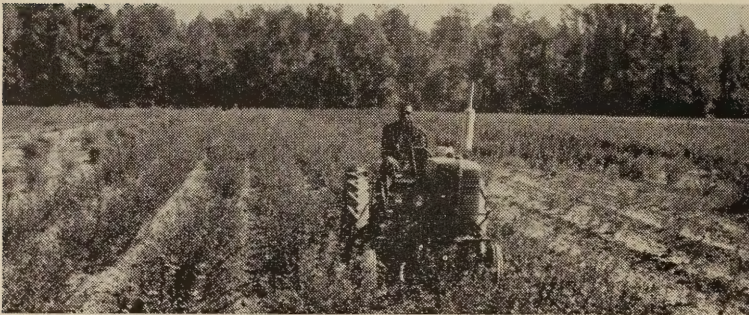
**ELAEAGNUS** *fruitlandi*.

2-2½ ft. ....	2.50
3-3½ ft. ....	3.50

**EUONYMUS** *kiatschovicus*. (*E. patens*.)

"Carrier" type with more nearly evergreen leaves.

1½-2 ft. breadth .....	1.25
2-2½ ft. breadth .....	1.75
2½-3 ft. breadth .....	2.25



**EUONYMUS** *carrieri* or *patens*  
Pen Johnson at the controls, Oct. 2, 1953

**GARDENIA** *florida*. The hardy type that grows outside here and is a prolific bloomer.

2-2½ ft. ....	2.50
2½-3 ft. ....	3.25

**ILEX** *crenata convexa* (*bullata*). Convex leaf Japanese Holly This is the spreading variety with small leaves and slow growth that is in such great demand.

12-15 in. spread .....	\$1.65
15-18 in. spread .....	2.00
18-24 in. spread .....	2.50

**SOLD OUT**



**ILEX** *convexa* (left)

**ILEX** *microphylla* (right)



**BROADLEAF EVERGREENS — continued**

Each per 10

**ILEX crenata microphylla.** Little-leaf Japanese Holly. Excellent plants with good color.

**Sheared specimens**

15-18 in. ....	2.75
18-24 in. ....	3.50

**ILEX crenata rotundifolia.** Roundleaf Jap. Holly. Extra fine plants.

15-18 in. breadth .....	1.75
2-2½ ft. breadth heavy .....	3.25
2½-3 ft. breadth heavy .....	4.50



**ILEX rotundifolia (Roundleaf Jap. Holly)**

**ILEX cornuta** Chinese Holly. Well branched plants with splendid color. Root pruned last spring for easy transplanting.

18-24 in. ....	4.00
----------------	------

**JASMINUM floridum.** Summer flowering.

2-3 ft. spread .....	1.50
3-4 ft. spread .....	2.00

**LIGUSTRUM japonicum.** Tall grower

3-4 ft. ....	\$1.50
4-5 ft. ....	2.00
5-6 ft. ....	2.50
6-7 ft. ....	3.50
7-8 ft. ....	5.00

**Wax-leaved Ligustrum**

**LIGUSTRUM lucidum.** Only a few plants left. Ask for quotations.

**LIGUSTRUM lucidum nobilis.** Upright growing type of lucidum with large rich green foliage.

2½-3 ft. FEW .....	2.50
--------------------	------

**LIGUSTRUM lucidum recurvifolium.** Darker green leaves with curved margins. Much prettier than regular lucidum.

2-2½ ft. ....	2.50
2½-3 ft. FEW .....	3.25

**LONICERA nitida.** Dwarf evergreen with tiny glossy foliage. Heavily pruned plants.

15-18 n. breadth .....	2.00
18-24 in. breadth .....	3.00

**NANDINA domestica.**

	2 to 3 canes	Heavy
18-24 in. ....	1.50	2.00
2-2½ ft. ....	1.75	2.50
2½-3 ft. ....	2.00	3.00

EACH PER 10

**OSMANTHUS** aquifolium (Illicifolium). Holly-leaf Osmanthus. Splendid plants of this excellent evergreen that resembles a deep green Holly. Said to be hardy on Long Island.

2-2½ ft. ....	3.00
2½-3 ft. ....	3.50
3-3½ ft. ....	4.25



**OSMANTHUS** aquifolium (Illicifolium)  
Preston Chandler urging the mule, Oct. 2, 1953

**OSMANTHUS** fortunei. Very handsome broad leaves.

2-3 ft. ....	3.00
3-4 ft. ....	3.75
3½-4 ft. heavy .....	4.50
4-4½ ft. heavy .....	5.00

**PHOTINIA** serrulata. Evergreen Photinia. Only a few plants left. Ask for prices.

**PIERIS** japonica. Few left.

12-15 in. ....	2.00
----------------	------

**PYRACANTHA** LALANDI.

1½-2 ft. cans or pots .....	1.50
4-5 ft. FEW .....	3.50
5-6 ft. FEW .....	4.50
6-7 ft. FEW .....	5.50

**PYRACANTHA** yunnanensis. Red berries.

1½-2 ft. cans .....	\$1.75
---------------------	--------

**VIBURNUM** burkwoodi. The semi-evergreen Viburnum with fragrant flowers like those of Carlesi.

1½-2 ft. ....	2.25
2-2½ ft. ....	3.00

**VIBURNUM** tinus. (Laurestinus). Nice plants, root pruned.

2-2½ ft. ....	\$3.00
---------------	--------

## Coniferous Evergreens

All Conifers pruned and/or sheared, with excellent form and color, priced B&B.

**BIOTA.** See Thuja. Each per 10

**CEDRUS** deodara.  
Few trees left. Ask for prices.

**CHAMAECYPARIS** - filifera. Thread-branched Cypress.  
Heavy sheared plants.

2-2½ ft. ....	2.50
2½-3 ft. x 2½-3 ft. ....	3.00
3-3½ ft. x 3-3½ ft. ....	4.00
3½-4 ft. x 3½-4 ft. Few .....	5.00

**CHAMAECYPARIS** plumosa. Plume Cypress. Dense sheared plants, and

**CHAMAECYPARIS** plumosa aurea. Gold Plume Cypress.

2-2½ ft. ....	2.00
3-3½ ft. ....	3.00
3½-4 ft. ....	3.50
4-4½ ft. ....	4.50



**ILEX** Rotundifolia (right)

**AMERICAN ARBORVITAE** (center)

**CHAMAECYPARIS** Plumosa Aurea (with spade)

**CHAMAECYPARIS** squarrosa veitchi nana. Dwarf cushion Silver Cypress.

2½-3 x 2½-3 ft. ....	3.50
----------------------	------

**CUPRESSUS** alumni lawsoni. Lawson's Blue Cypress.  
Extra fine plants of perfect form and color.

3-3½ ft. ....	3.50
3½-4 ft. ....	4.25

**JUNIPERUS** excelsa stricta. Spiny Greek Juniper. Nice specimens.

15-18 in. ....	1.50
18-24 in. ....	1.75
2-2½ ft. ....	2.25
2½-3 ft. ....	2.50

**JUNIPERUS** chinensis pfitzeriana. Pfitzer's Juniper. Root pruned.

1½-2 ft. ....	2.50
2-2½ ft. ....	3.00
2½-3 ft. ....	3.50

## CONIFEROUS EVERGREENS — continued

Each per 10

**JUNIPERUS** Hetzi. (Blue Pfitzer). A very beautiful new spreading juniper, similar to Pfitzer, but superior to it in its interesting bluish color, more shapely natural growth, and more rapid development.

1½-2 ft. ....	2.00
2-2½ ft. ....	2.50
2½-3 ft. ....	3.25
3-4 ft. ....	4.00

**JUNIPERUS** ch. pfitzeriana compacta Compact Pfitzer with soft, fine-textured foliage, low spreading. Root pruned.

15-18 in. ....	2.00
18-24 in. ....	2.50

**JUNIPERUS** hibernica. Irish Juniper. Beautiful sheared plants with good color and plenty of body.

2½-3 ft. ....	1.75
3-3½ ft. ....	2.25
3½-4 ft. ....	2.75

Fastigiata Variety. The perfectly finished variety, denser, more shapely, often called "French Spikes."

2½-3 ft. ....	2.00
3-3½ ft. ....	2.50



**JUNIPERUS excelsa stricta**

(Greek Juniper - right)

**JUNIPERUS hibernica** (Irish Juniper - left)

**PICEA excelsa**. Norway Spruce. Splendid little specimens for apartment Christmas trees.

15-18 in. ....	1.50
----------------	------

**PINUS strobus**. White Pine. Dense sheared specimens. Good for living Christmas trees, cash and carry sales, etc

18-24 in. ....	\$1.75
2-2½ ft. FEW ....	2.25

**TAXUS baccata hibernica**. (Irish Yew). Perfect specimens,

2-2½ ft. ....	4.00
2½-3 ft. ....	5.00
3-3½ ft. ....	6.00

**TAXUS cuspidata**. Japanese Yew.

18-24 in. ....	3.25
2-2½ ft. ....	4.00

## CONIFEROUS EVERGREENS — continued

Each per 10

**TAXUS cuspidata.** Upright. These are an upright or bush type with broad base. Propagated from Capitata, but not true type. Heavily pruned, these are beauties.

2-2½ ft. ....	4.50
2½-3 ft. ....	5.50

**TAXUS media andersoni.** Excellent spreading variety. Similar to Cusp.

1½-2 ft. ....	3.00
2-2½ ft. ....	3.50

**TAXUS media browni.** Bush type.

18-24 in. ....	3.50
----------------	------

**TAXUS media Cedar Hill.** Very beautiful upright growing var. Similar to Hicksi.

2-2½ ft. ....	3.00
---------------	------

**TAXUS media Hatfieldi.** Compact upright variety. Columnar form.

2-2½ ft. ....	3.00
---------------	------

**TAXUS media Hicksi.** Hick's Yew.

2-2½ ft. ....	3.50
---------------	------

**TAXUS media 31-T.** Fine textured upright vase or bush form.

18-24 in. ....	3.50
----------------	------

**THUJA occidentalis nigra.** Dark green American Arborvitae.

2-2½ ft. ....	1.75
2½-3 ft. ....	2.00
3-3½ ft. ....	3.00

**THUJA occ. globosa.** Globe Arborvitae. These are "round and firm, and fully packed", pretty as a picture.

15-18 in. ....	1.50
18-21 in. ....	2.00
21-24 in. ....	2.25

**THUJA occ. pyramidalis.** Broad specimens.

2-2½ ft. ....	1.75
2½-3 ft. ....	2.25

**THUJA orientalis (Biota) aurea nana globosa.** Berckman's Golden Globe. Broader and fuller than regular Berckman's Golden, these have the eye appeal you want.

15-18 in. ....	\$1.75
18-21 in. ....	2.25
2-2½ ft. ....	2.75

**THUJA or. compacta.** (Biota) Compact bright green Arborvitae at a bargain.

2-2½ ft. ....	1.50
2½-3 ft. ....	2.00

**THUJA or. (Biota) bonita.** Beauties.

12-15 in. ....	1.25
15-18 in. ....	1.75
18-24 in. ....	2.25

## Flowering Shrubs

NICE, YOUNG, VIGOROUS HEAVY STOCK. 50 OR MORE OF ONE KIND AND GRADE AT THE 100 RATE

Each      Each  
per 10    per 100

### B & B SCHEDULE FOR SHRUBS

When time and available labor allow, we will B & B shrubs for following charges in addition to the each price per 10.

2-3 ft. ....	.25
3-4 ft. ....	.35
4-5 ft. ....	.50

**CYDONIA japonica nivalis. Pure white.** Grafted on malus. Here is an item that is in the novelty class because it is so seldom seen. It has sales appeal all during its two month blooming period in the spring. Customers are astounded to see a really white Cydonia and will buy it.

1½-2 ft. ....	\$1.00	\$0.90
2-3 ft. ....	1.40	1.25

**CYDONIA japonica. True upright type. Red flowers.** Well branched.

1½-2 ft. ....	\$0.50	\$0.40
<del>2-3 ft. ....</del>	.60	.50

**DEUTZIA. Pride of Rochester.** Extra heavy young shrubs at low prices. Good for enclosure of an athletic field or other large area, backgrounds, wind breaks.

3-4 ft. ....	\$0.40	\$0.30
4-5 ft. ....	.45	.40
5-6 ft. ....	.75	.60
5-6 ft. .... per 1000 ....		\$400.00

**FORSYTHIA spectabilis.**

2-3 ft. ....	.40	.35
3-4 ft. ....	.50	.40
4-5 ft. heavy ....	.65	.55
5-6 ft. heavy ....	.95	.75
6-8 ft. heavy ....	1.25	1.00

**FORSYTHIA suspensa. Weeping Forsythia.**

4-5 ft. ....	.65	.55
5-6 ft. ....	.95	.75

**HIBISCUS syriacus. Althea,**

BOULE deFEW. Double red.

ARDENS. Double violet.

ANEMONAEFLORUS. Dbl. pink.

3-4 ft. ....	.50	.40
4-5 ft. ....	.60	.50

**SPECIAL White Altheas. Single. Pure white and white with red centre. Also dbl. variegated.**

3-4 ft. ....	.35	.25
4-5 ft. ....	.50	.35

**HYDRANGEA paniculata grandiflora. ("P. G.")**

2-3 ft. ....	.60	.50
--------------	-----	-----

## FLOWERING SHRUBS — continued

	Each per 10	Each per 100
<b>KOLKWTZIA</b> amabilis. Beautybush.		
2-3 ft. ....	.55	.45
3-4 ft. ....	.70	.60
<b>LAGERSTROEMIA</b> indica. (Crepe Myrtle) Watermelon Red. Use Virginia grown Crepe Myrtles for increased hardiness.		
2-3 ft. ....	.65	.50
3-4 ft. ....	1.00	.75
<b>LONICERA</b> fragrantissima. Bushy plants.		
2-3 ft. ....	.50	.40
3-4 ft. ....	.60	.50
<b>PHILADELPHUS</b> coronarius. Sweet Mockorange.		
3-4 ft. ....	.45	.35
4-5 ft. ....	.55	.45
<b>PHILADELPHUS</b> grandiflorus.		
3-4 ft. extra-hvy. ....	.50	.40
4-5 ft. extra hvy. ....	.75	.60
<b>SPIRAEA</b> van houttei. Heavy plants.		
2-3 ft. ....	.40	.30
3-4 ft. ....	.50	.40
4-5 ft. extra hvy. ....	.75	.60
5-6 ft. extra hvy. ....	1.00	.80
<b>SPIRAEA</b> prunifolia.		
2-3 ft. ....	.50	.40
3-4 ft. ....	.60	.50
<b>SYRINGA</b> chinensis. (rothomagensis). Chinese Lilac.		
2-3 ft. ....	.55	.45
<b>SYRINGA</b> . French Hybrid Lilac.		
LUDWIG SPAETH, sgle. Deep purple.		
2-3 ft. ....	.75	
MME. LEMOINE, dbl. White.		
1½-2 ft. ....	.75	
WALDECK ROUSSEAU, dbl. Lilac pink.		
1½-2 ft. ....	.60	
<b>WEIGELIA</b> rosea. Pink Weigelia.		
2-3 ft. FEW ....	.50	.40
4-5 ft. extra heavy ....	.90	.75

## Flowering Trees

	EACH PER 10	
<b>ACER</b> palmatum atropurpurea. Japanese Redleaf Maple. Limited supply. Grown from specially selected redleaf seedlings.		
15-18 in. B & B .....		\$2.50
<b>CERCIS</b> canadensis. Red Bud or Judas Tree.		
	B. R.	B & B
3-4 ft. ....	.60	.90
4-5 ft. ....	.80	1.15
5-6 ft. ....	1.00	1.50
6-8 ft. ....	1.75	2.75
8-10 ft. ....	3.50	5.00
<b>CORNUS</b> florida. White Dogwood.		
2-3 ft. B & B .....		1.25
3-4 ft. B & B .....		1.75
4-5 ft. B & B .....		2.50

**FLOWERING TREES — continued**

EACH PER 10

**FRANKLINIA** altamaha (Gordonia). The rare Frank-  
linia bearing snowy white flowers in the fall until  
frost. A splendid novelty.

3-4 ft. B & B .....	\$2.75
4-5 ft. B & B .....	3.25

**MALUS** - Flowering Crabapple. Flowering Crabapples are  
one of our specialties. We have choice varieties and  
extra nice trees, all well branched.

**VARIETIES AND SIZES:**

**ELEYI.** Red flowers, red foliage, and large red fruit borne  
on vigorous trees.  
4-5 ft., 5-6 ft.

**HOPA.** Red foliage, red flowers, and red fruit.  
4-5 ft., 5-6 ft.

**NEIDZWETSKYANA.** Red Vein.  
4-5 ft., 6-8 ft.

**SCHEIDECKERI.** Semi-double pink flowers. Yellow fruit.  
4-5 ft., 5-6 ft.

**SPECTABILIS.** Very showy pink flowers. Slender erect  
grower. Few left.  
4-5 ft., 5-6 ft., 6-8 ft.

**PRICES, above varieties:**

	b. r.	B & B
4-5 ft. ....	\$ .90	\$ 1.25
5-6 ft. ....	1.25	1.75
6-8 ft. ....	1.75	2.50

**MALUS.** Fruiting Apple. Heavy well branched trees,  
transplanted four years ago. Especially good for land-  
scape planting. Assorted varieties.

SIZES:		b. r.	B & B
8-10 ft. ....	1½-2 in. cal. ....	3.00	4.00
10-12 ft. ....	2-2½ in. cal. ....	4.00	5.50
10-12 ft. ....	2½-3 in. cal. ....	5.00	7.50

**PRUNUS** serrulata Kwanzan. Pink upright double flower-  
ing cherry. Spring delivery only.  
4-5 ft. b. r. .... \$3.00  
5-6 ft. b. r. .... 3.50

**PRUNUS** subhirtella pendula. Weeping Jap. Cherry. No. 1  
heads, budded on standards, single & double varieties.  
5-6 ft. b. r. Spring delivery only .. \$5.00

**SHADE TREES**

EACH PER 10

**ACER** platanoides. Norway Maple. Reasonably straight.  
Limited number.

<del>SOLD OUT</del> ... 2½-3 in. cal. ....	\$ 8.50
14-16 ft. .... 3-3½ in. cal. ....	12.50

Somewhat crooked Norway Maples cheaper.

**ACER** Rubrum. Red or Swamp Maple. Well branched.  
Most trees headed low.

6-8 ft. .... 1-1¼ in. cal. ....	\$2.50
8-10 ft. .... 1¼-1½ in. cal. ....	3.50
8-10 ft. .... 1½-1¾ in. cal. ....	4.50
10-12 ft. .... 1¾-2 in. cal. ....	6.00

Few larger quoted on request.



## SHADE TREES — continued

Each per 10

**ACER** saccharum. Sugar or Hard Maple.8-10 ft. .... 1-1 $\frac{1}{4}$  in. cal. .... \$2.508-10 ft. .... 1 $\frac{1}{4}$ -1 $\frac{1}{2}$  in. cal. .... 3.50

Few larger quoted on request.

**QUERCUS** palustris. Pin Oak. Only a few trees in all sizes. **Prices include B & B.**8-10 ft. .... 1 $\frac{1}{4}$ -1 $\frac{1}{2}$  in. cal. .... \$5.008-10 ft. .... 1 $\frac{1}{2}$ -1 $\frac{3}{4}$  in. cal. .... 6.50

Few larger trees priced below.

**QUERCUS** rubra. Red Oak. Limited number of well branched trees. Quoted on request.**QUERCUS** phellos. Willow Oak. Few trees, various sizes. Quoted on request.**SALIX** babylonica. Weeping Willow.

4-5 ft. well branched ..... \$ .75

5-6 ft well branched ..... 1.00

**SALIX** elegantissima. Golden Bark Weeping Willow.

4-5 ft. well branched ..... \$ .75

5-6 ft. well branched ..... 1.00

**ULMUS** americana. American Elm.

Assorted sizes - suitable for Parks, Highway planting. Quoted on request.

**LARGE TREE PRICES:** Limited number. Oaks, Maples, Ashes, Elms. Wire balled.2 $\frac{1}{2}$ -3 in. cal. .... B & B ..... \$20.003-3 $\frac{1}{2}$  in. cal. .... B & B ..... 32.503 $\frac{1}{2}$ -4 in. cal. .... B & B ..... 47.50*Testimonials*

Virginia, June 5, 1953: "As for the stock received from you, we have never received more beautiful material, and for the most part has held up beautifully."

Delaware, Oct. 4, 1953: "We were very pleased with the plants that Mr. .... brought back with him."

Washington, D. C., April 15, 1953: "The plants were very nice and we are well pleased."

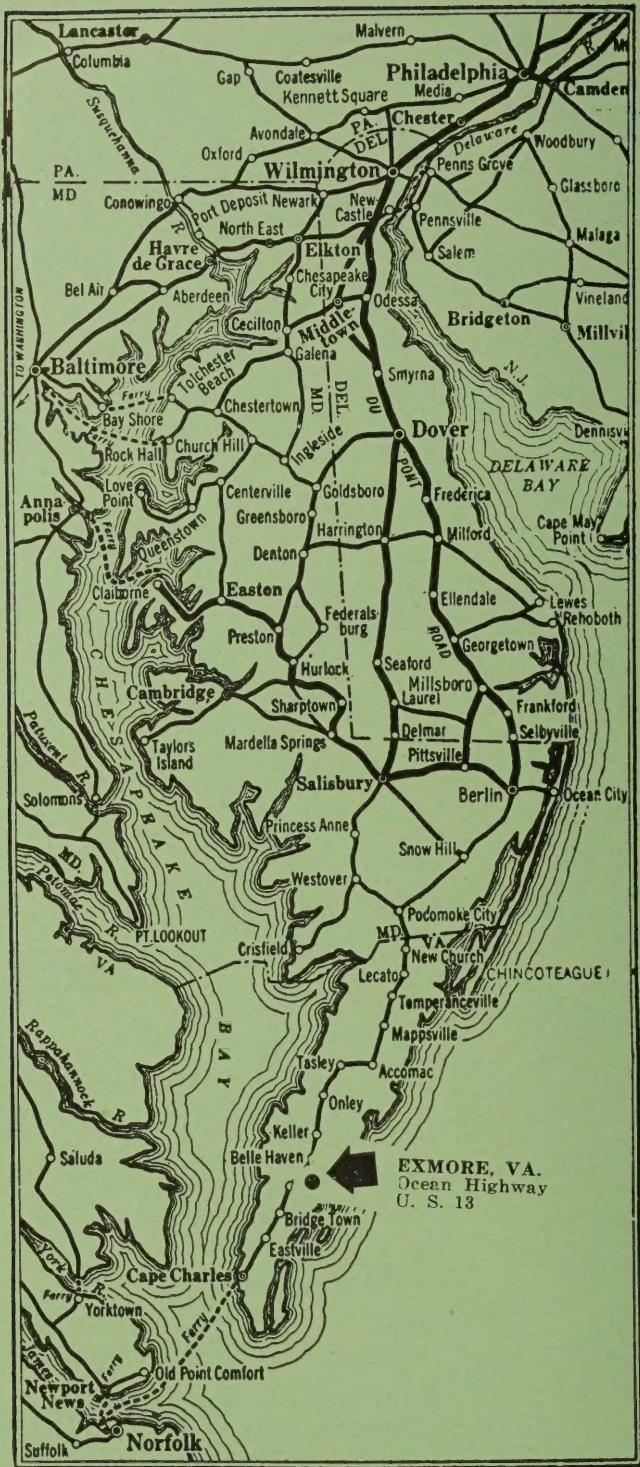
Ohio, Sept. 30, 1953: "The Azaleas and Ilex came through in excellent condition and we are very satisfied with these plants."

Pennsylvania, Aug. 7, 1953: "We have always heard that your merchandise is top quality and graded right, as well as priced right."

Delaware, Aug. 7, 1953: "We were extremely pleased with the plants of Ilex cornuta and Cornuta burfordi which you sent us."

Maryland, Dec. 22, 1952: "We must say that the shrubs you selected and shipped us were the best shrubs we have ever purchased anywhere, and we are grateful to you."

New Jersey, Sept. 28, 1953: "I was very favorably impressed with the stock that you showed us."



Exmore, Va. is located on the Del-Mar-Va Peninsula. Readily reached by Highway U. S. 13, Pennsylvania Railway, Greyhound Bus, or Plane to Weirwood or Parksley; two hundred miles south of Philadelphia.

Connected with Norfolk by fast car and truck ferry, running every fifty-five minutes.